

Free! Produced and distributed by volunteers to the 4,200+ households of Horsell

# THE *Resident*



*The magazine of Horsell Residents' Association*

*Winter 2023*

## INSIDE THIS ISSUE

**Horsell  
Care at 25**

**HRA  
Survey  
Report**

**Volunteer  
Spotlight**

**Horsell  
Christmas  
Market**

*full guide inside*

[theresidenteditor.wixsite.com/magazine](https://theresidenteditor.wixsite.com/magazine)  
[www.horsellresidents.com](http://www.horsellresidents.com)

Christmas tree at Startrite Autos Horsell.  
Photo: Graham Bardon.



# A word from the editorial team

## Greetings...

This is the first edition of this magazine without Lucy, who has driven production since 2017, as our leader. In the meantime, HRA Chair Alan Taylor, has stepped in to make up the numbers. Whether this has been a helpful move, or not, is currently a secret among the editorial team!

There is always joy in putting together the winter edition with its focus on the Horsell Christmas Market. Perhaps it is because it's so satisfying contemplating the conversion of the High Street from car parking nightmare to a colourful cascade of market stalls, lights, traders' goods and handicrafts, music, street food and drink. The market and the other annual Horsell Residents' Association events are all really good examples of how Horsell is 'Powered by Volunteers.' Planning for the market commences in the summer but come market day we hope everyone agrees it really is worthwhile.

This edition, being the last of the year, inspires the editing team to look back and reflect with gratitude on the team behind the team that assists us in pulling the magazine together, whether it's compiling articles, checking copy, or pushing magazines through letterboxes. Our thanks also go out to the local traders for entrusting us with your advertising. Together, we're all one big Horsell family really. It only remains for us to wish you all a very Happy Christmas and a prosperous New Year.

Best wishes from *Linda, Sue, Karen, Victoria and Alan.*

PS. We'd like to share the joy of putting the magazine together – why don't you come and join us? Even if you don't think you could be our Lead Editor, we can always do with extra help and, you never know, you might be so inspired that you decide to take over from Alan. See page 3 for more details.



The Resident – Horsell Residents' Association's magazine about and for our village.  
**Editor:** Volunteer position vacant [theresidenteditor@gmail.com](mailto:theresidenteditor@gmail.com)  
**Editorial team:** Victoria Bathe-Taylor, Linda Russell, Karen Waldron and Sue Waters.  
**Advertising co-ordinator:** Ian Berry [theresidentads@gmail.com](mailto:theresidentads@gmail.com)

**NEXT ISSUE:** Spring 2024  
**Advertising deadline:** noon Sunday 14th January 2024  
**Copy deadline:** noon Sunday 21st January 2024

*Articles and photographs about our village are welcomed from our whole community.*

## THE Resident

Published by **Horsell Residents' Association Limited**  
Registered charity (1162487) and limited company (05377490)

### Horsell Residents' Association CONTACTS

**President:** Dorothy Smith  
[dorothy@andover.co.uk](mailto:dorothy@andover.co.uk)

**Chair:** Alan Taylor  
[chair@horsellresidents.com](mailto:chair@horsellresidents.com)

**Hon. Treasurer:** Carol Cheesman  
[CarolC@Cheesman.co.uk](mailto:CarolC@Cheesman.co.uk)

**Membership Secretary:** Geoff Hughes  
[membership@horsellresidents.com](mailto:membership@horsellresidents.com)

**Director & STC co-ordinator:**  
Lizzie Judson  
[lizzie.judson@horsellresidents.com](mailto:lizzie.judson@horsellresidents.com)

### Why not support the association that supports you?

Become a member of HRA and help to support our village projects.  
See [www.horsellresidents.com](http://www.horsellresidents.com) for full details of our aims and benefits.

Annual household membership is £5 by standing order or just pay £50 for lifelong household membership.

To download a membership form go to:  
[www.horsellresidents.com/home/JoinUs](http://www.horsellresidents.com/home/JoinUs)  
or email [info@horsellresidents.com](mailto:info@horsellresidents.com).

Text and photos copyright individual authors and photographers as named.

Printed by: Woking Print,  
The Printworks, St John's Lye, Woking,  
Surrey GU21 7RS. Tel: 884884  
Email: [sales@wokingprint.com](mailto:sales@wokingprint.com)

Artwork by: TBB Design.  
Tel: 829185  
Email: [tim@tbbdesign.co.uk](mailto:tim@tbbdesign.co.uk)  
[www.tbbdesign.co.uk](http://www.tbbdesign.co.uk)

No responsibility for the quality of goods or services advertised in this magazine can be accepted by the publishers or printers. Advertisements are included in good faith. No part of this magazine may be reproduced in any form whatsoever without the prior permission of the Publishers. The Publishers do not necessarily agree with the views expressed by contributors, nor do they accept any responsibility for errors of interpretation in the subject matter of this magazine. All reasonable care is taken to ensure accuracy in preparation of the magazine but the Publishers cannot be held legally responsible for errors in the articles or the return of unsolicited manuscripts, artwork, or projects. Whilst every care is taken, no responsibility can be accepted for the safety of material submitted.

# Horsell Happenings



Alan Taylor, HRA Chair

## View from the Chair

Since my scribbles in the autumn edition of this magazine, much more information is now in the public domain regarding the implications of Woking Borough Council's (WBC) financial challenges. I had anticipated that requests would come from the council for voluntary groups to infill services but as yet nothing has been forthcoming.

However, I was informed that WBC Neighbourhood Services had been approached by a couple of residents about managing the flower beds in Queen Elizabeth Gardens, but it was not met with a great deal of enthusiasm by the council. Perhaps it is still early days and there is still much head scratching for them to do in devising their strategy.

I was encouraged by Pamela Barden who in the last edition (autumn 2023 p13) suggested building a community kitchen garden in the gardens. However, there were no interested residents. I thought it would be a super community activity.

The Resident magazine involves many disciplines, from editing content to its posting through the 4,200 Horsell letterboxes, and everything

in between. So, it was good that the HRA Committee hosted a BBQ in early September attended by about 50 volunteers to thank them for their commitments throughout the year. For those volunteers who were unable to attend may I take this opportunity to extend my thanks to you too.

On the question of our quarterly magazine and following months of advertising for a person to coordinate publication, we have not found a suitable candidate. Do you have the desire and commitment for the role? If you would like more information, then please contact me for an informal chat. I regret to say that if we do not fill the role then the future editions of the magazine are at risk, which would be a shame given the value of the magazine and the investment volunteers have made in establishing its local reputation and community value.

As I prepare this article it is early October, and it is difficult to realise this is the winter edition which focuses on our Christmas market on Saturday 2nd December. So, having been prompted by the season, I would like to conclude by extending my warmest best wishes and Christmas greetings to you all and your families. I hope you have a truly wonderful festive season.

**HRA** Horsell Residents' Association Ltd  
Powered by volunteers

## Horsell Christmas Market 2023

We need your help!

**Friday 1st December**  
2pm  
Shifting heavy blocks and gazebos

**Saturday 2nd December**  
7am to 8pm (rota system)  
Setting up gazebos, electric lighting, tables, chairs etc. – and taking it all down again!  
Stewarding in the afternoon.

**Sunday 3rd**  
(am)  
Packing and storing gazebos

**Monday 4th**  
(am)  
Returning all heavy materials

**How can you help – and when?**  
Please let us know at:  
[xmas@horsellresidents.com](mailto:xmas@horsellresidents.com)



## Lead Editor required for The Resident Magazine

We still need a Lead Editor to coordinate and work with the current editorial team in the production of this quarterly magazine. If you are interested in supporting your community and would like an informal chat about what's involved please contact Alan Taylor by email: [chair@horsellresidents.com](mailto:chair@horsellresidents.com)

**Horsell Charity Calendar 2024**

**Did you know?**  
The Horsell Charity Calendar contains not just details of local events, but also items of general interest.

Calendar produced by:

**Raising funds for:**

PARKINSON'S<sup>UK</sup>  
CHANGE ATTITUDES.  
FIND A CURE.  
JOIN US.

YOUR SANCTUARY  
YOUR LIFE WITHOUT FEAR

Woking stroke ability

Woking & Sam Beare  
Hospice and Wellbeing Care

Available from:  
Apples & Pears,  
Premier,  
Squires &  
St Mary  
the Virgin Church

# Horsell Happenings

**Fancy organising the next issue? As Editor you decide what's included!**

## HRA Key Event Dates 2024



Horsell Garden Safari. Photo: David Williams.



Horsell Village Show. Photo: Bob Holmes.



Horsell Flowerpot Festival. Photo: Caroline Hughes.



Scout and Guides' May Fayre. Photo: Lucy Longley.



Horsell Flowerpot Festival.

### It's never too early to start planning your activities for 2024

So put these Horsell events in your diary.

**Scouts & Guides' May Fayre** at Wheatsheaf Recreational Ground on Bank Holiday Monday 6th May. 11:45 – 4:30 pm.

**Horsell Garden Safari** where residents open their gardens is on the weekend of 15th & 16th June.

**Picnic on the Green** held in front of The Cricketers takes place on Sunday 7th July from noon until 4pm.

**Horsell Village Show** held at the Horsell C of E Junior School, Meadway Drive is on Saturday 27th July from noon.

**HRA AGM** will be held on Thursday 31st October 7pm for a 7.30pm start.

**Horsell Christmas Market** will again be held along Horsell High Street on Saturday 7th December between 1pm until 5pm.

**Horsell Flowerpot Festival** is an opportunity to showcase your artistic talents with a flowerpot display outside your house. This event runs throughout the summer.

All these activities are run by volunteer teams and there is always a warm welcome to anyone who would like to be involved. Please contact [chair@horsellresident.com](mailto:chair@horsellresident.com) for more information.

## Garden Safari 15<sup>th</sup> and 16<sup>th</sup> June 2024

In summer 2023 we had lovely warm weather and so many people came out to view the 21 gardens which were kindly opened for the 21st Horsell Garden Safari. Over the years the Garden Safari has raised the magnificent sum of £81,737, and now it's not too early to think about the 2024 Garden Safari! New gardens are needed, as well as those who have supported us since 2002. Please contact us by email and let us know if you would care to open.

Penny Kramer [colinandpenny@sky.com](mailto:colinandpenny@sky.com) or Carol Cheesman [CarolC@Cheesman.co.uk](mailto:CarolC@Cheesman.co.uk)



Photo: Bob Holmes

TRADING IN SURREY FOR OVER 50 YEARS

## First choice for domestic appliance repairs and service

- Fixed call-out
- Fast response
- Built-in / freestanding machines

**Call 01483 539531**

**RSM Domestic Appliances**  
FRIENDLY SERVICE • BIG SAVINGS • FAST DELIVERY

[www.rsmdomesticappliances.com](http://www.rsmdomesticappliances.com)

## FRAZERS SURVEYORS

Your Local Chartered Surveyors

- RICS HomeBuyer Reports
- Building Surveys
- Valuations
- All Types Of Buildings
- Over 30 Years Experience
- Call Or Visit Us Today For A Competitive Quote

Frazers Surveyors Ltd  
Thornash House, 37 High St, Horsell, GU21 4UR  
T: 01483 730909 E: [surveying@frazers.co.uk](mailto:surveying@frazers.co.uk)  
[www.frazers.co.uk](http://www.frazers.co.uk)

## Big Phil COMPUTERS

Finding the solutions to all your computer and mobile device problems.

- All versions of Microsoft Windows & Apple operating systems installed and repaired.
- Mobile phone and tablet recommendations & set-up. Virus removal, home networking, internet security & PC or laptop upgrades. PC's tailored to your requirements, hardware & software recommendations made.

Mobile: 07836 711866  
Landlines: 01932 348096  
01483 661555  
01276 539236

Web Site: [www.bigphilcomputers.co.uk](http://www.bigphilcomputers.co.uk)  
Email: [phil@bigphilcomputers.co.uk](mailto:phil@bigphilcomputers.co.uk)

With new single level facilities we are able to provide IT services for all disabled customers that need wheelchair or mobility scooter access.

Areas Covered: Addlestone, Bisley, Brookwood, Byfleet, Cobham, Cobham, Guildford, Horsell, Knaphill, Lightwater, New Haw, Ockham, Pyrford, Ripley, Send, West Byfleet, West End, Weybridge, Windlesham, Woking & Woodham

# Horsell Residents' Association (HRA) 2023 Survey

Many thanks to the 61 people who responded to the survey published in the 2023 summer issue of 'The Resident'. We wanted to discover how much the people of Horsell know about HRA activities, and to capture suggestions for the future. There were questions about how connected people feel to the Horsell community, how aware people are of the HRA, levels of participation, and the need for more information. Here we summarise the results of the survey.

The survey listed the objectives of the HRA ("the independent voice of Horsell"), which are to:

1. Promote, uphold and protect the interests of residents in all matters affecting or likely to affect Horsell and its environs.
2. Bring to the notice of relevant authorities and bodies those matters affecting the interests of Horsell residents, and accordingly keep its members informed.
3. Support and promote social and benevolent activities for the general benefit of Horsell residents and fundraise in support of such activities.

The results indicate that the majority feel the HRA is addressing its objectives well. Many of the comments mention the need for improved communication regarding how they are achieved. Some focus on the HRA's role in representing Horsell to relevant authorities. Although we see this as an opportunity, it should be noted that the HRA can only assist and not directly control these matters.

Here's a selection of comments from the survey:

*"I feel that Horsell is a 'busy' village with a real sense of community."*

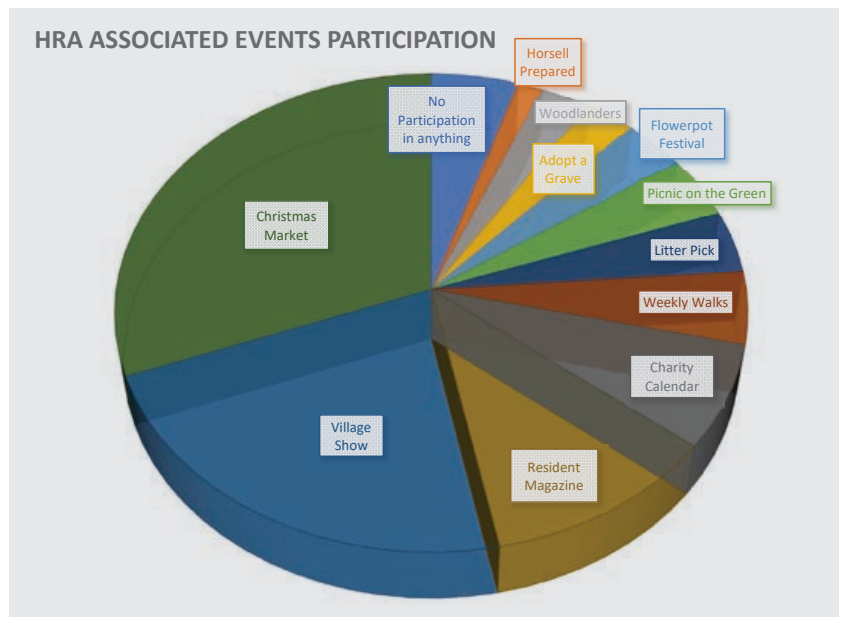
*"[The way that] 'Horsell Prepared' rose to the occasion during COVID was testament to great organisation with GREAT people."*

*"Great commitment by small organising groups that engage with pop-up teams of local volunteers, provide a mixture of events and activities that exceptionally enrich the community. All should be applauded."*

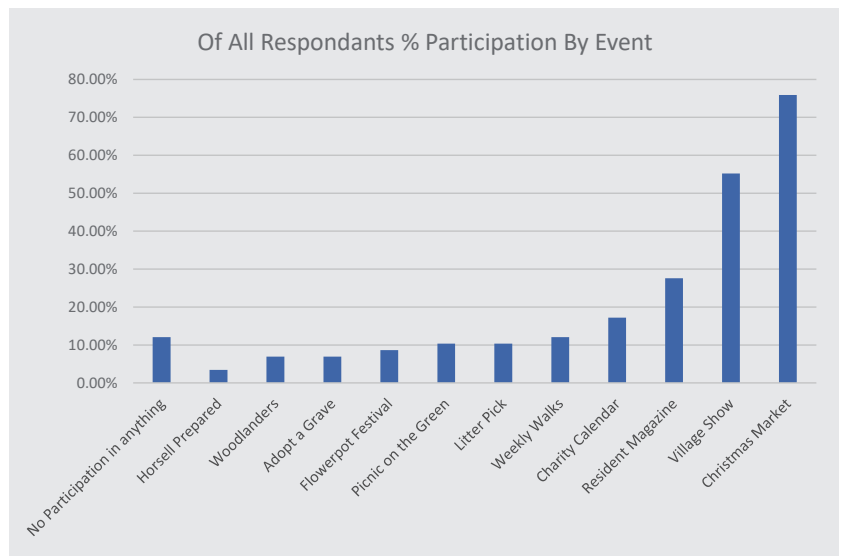
It is important to note that a significant proportion of the respondents are either already close to the HRA or are involved with many of its activities, which is likely to have affected the responses. In particular, in relation to the extent to which the respondents feel connected to the Horsell community, the results are probably strongly influenced by existing knowledge of the HRA.

On the other hand, some respondents are new to Horsell and many live some distance from the centre. What is clear is that people enjoy hearing about what is going on and find Horsell a wonderful community and a friendly place to live. However, there is evidently a need for more effective communication with people who find socialising and getting involved rather challenging: this is something which the HRA committee has been working on and will continue to address.

As the following pie chart indicates, there is a good level of awareness and strong participation in HRA-related activities, but there is clearly scope for improvement.



Details of these and all HRA events can be found at <https://horsellresidents.com>  
Who responded to the survey? The majority of respondents were in the older generation, probably because the survey was published in 'The Resident'.



Future surveys should be better targeted to include younger people's opinions.  
With thanks to Adrian Beesley of the HRA for his analysis and presentation of the survey. If you have any comments, please email [adrian.beesley@horsellresidents.com](mailto:adrian.beesley@horsellresidents.com)

**Horsell Sings! Christmas Concert**  
**Saturday 16th December 7.30pm**  
 St Mary's Church, Church Hill, Horsell, GU21 4QQ  
 Anna Tabbush with Camilo Mertjura (guitar and vocals) and Rachel Drayson (cello)  
*Interval*  
 Horsell Sings! conducted by Anna Tabbush  
 Audience Carol Singing  
**Tickets £12.50**  
*Profits will be donated to a local charity*

# Horsell Care at 25

Got a few hours to spare 4 times a year? Spend them helping get The Resident to print!



Wow! As I write this article, I cannot believe that Horsell Care has been in existence for nearly 25 years! It was created as a millennium project in 1999 (although the idea started in 1998) to provide the village with its own Good Neighbour Scheme. Part of the driving force behind this initiative were Valerie Froy, Tony Noel, Joy Marson, Mary Temple and the late Margot Craig and Frank Thompson to name but a few. Tony Noel is currently working on a history of Horsell Care from its beginnings, which we look forward to reading.

For the 25th anniversary, we would like to contact all previous volunteers to hear their stories and invite them to any celebration we might have next year. If you are one of these people or you know of someone, please contact me on my mobile number below.

Since being founded, Horsell Care has helped hundreds of residents. We assist local people by transporting them to GP surgeries, hospital appointments and weekly shopping trips. In most cases, our clients don't have anyone close by to do this, so they rely on our volunteers to provide a helping hand from time to time.

In addition to this, we organise coffee mornings and lunches for our clients and volunteers.

In 2018, we were lucky enough to win the Community Heroes Award in the category of Good Neighbour Scheme. We are very proud to have had this recognition.

Covid hit us badly! We had to stop our services as many of our volunteers are over 65. However, Horsell Prepared was able to step into the breach at very short notice providing an invaluable service through the pandemic to Horsell's most vulnerable residents. Many neighbours within Horsell were also keeping more of an eye on each other. We were able to resume our activities in the autumn of 2021 and have been going from strength to strength since then.

At the very beginning, we had two boxes of client and volunteer details and everything was entered manually. Fortunately, we have moved with the times and since 2022 it's all on computer. For those of you who are familiar with it, we even use WhatsApp! Our clients still call in to register their request, but now we can contact our volunteers by telephone or WhatsApp.

That being said - and here it comes - we desperately need more volunteers. You don't have to commit to a set time or amount of time. Whatever you do will make a great deal of difference to the lives of many people in our community. If you think you could help us in any way, or if you know of anyone who would like to do so, please contact me on the phone number below and I can give you more information.

I would like to take this opportunity to thank all of our current volunteers for their time and commitment. It is truly appreciated by me and the committee and, most of all, our clients, who rely on our services.

**Wendy Bratton**  
Horsell Care Chairperson  
Mobile 07747 057660

**NORSWORTHYS**  
*Health & Beauty*

74 High Street, Horsell,  
Woking, Surrey GU21 4SZ  
Tel: 01483 727715

Opening Hours

Monday	By Appointment Only
Tuesday	10am - 8pm
Wednesday	10am - 8pm
Thursday	9am - 6pm
Friday	9am - 6pm
Saturday	10am - 4pm
Sunday	Closed

info@norsworthys.co.uk



# Christmas *in* Horsell

Saturday 2nd December 2023

## Horsell Christmas Market

road closed from The Crown to Meadway Drive

1.00 - 5.00

## Horsell Schools' PTA

## Christmas Fair

Horsell Village School

12.00 - 3.00

[xmas@horsellresidents.com](mailto:xmas@horsellresidents.com)

*please note: no parking on  
the High Street*



Second Thursday Club  
Horsell Residents' Association  
Powered by volunteers



# Horsell Christmas Market 2023

**Saturday 2nd December 1pm to 5pm**

Do you enjoy shopping for a unique Christmas gift, or for street food and a local brew, listening to local bands or just mooching along chatting to friends? You'll find it all in Horsell High Street at the Christmas Market. Pull out the map and use as your guide to find your favourite stalls. There

are 10 new stall holders this year and lots of old favourites. The event is organised by the Horsell Residents' Association's Second Thursday Club, with help on the day from other local people, to promote local shops and 51 local crafts people – and for everyone to enjoy!

## A huge thank you

To our wonderful sponsors (see page 10) plus all the traders, stallholders, performers and volunteers who make the Horsell Christmas Market happen.

Please note: all details, timings etc. were correct at time of going to press but may be subject to change.

## Stalls in the High Street and Horsell Evangelical Church

### The Crown

Thurstons – locally brewed prize-winning beer in gift packs

- 1 The Willowmead Potter – ceramics
- 2 Dee's Kitchen – Indian savouries and snacks
- 3 Mike's Turned Wood – turned wood bowls, vases, plates
- 4 Horsell Knitters – knitted and other craft items
- 5 Lois Redman – Homemade Christmas decorations

### Startrite

- 6 The Cricketers – mulled wine, mince pies and hot chocolate (all proceeds to Woking & Sam Beare Hospice)

### Hamlyn's

- 7 The Friends of Woking Community Hospital Charity – Christmas cards, second hand books
- 8 Oliver Jones – handcrafted silver jewellery
- 9 Festive Oak Decorations – handmade wreaths, decorations and garlands
- 10 Flowers Estate Honey – Honey, beeswax candles and glassware
- 11 Marisa Noelle – teenage books
- 12 Sophie Sews – Soft furnishings, interior design items
- 13 Horsell Scouts and Guides – Sweets and cakes

### China Chef

- 14 Chris Dance – Christmas wreaths
- 15 Karen's Cakes and Biscuits
- 16 Galaxy Gems – custom jewellery
- 17 Horsell Cushion Company – unique cushions from reclaimed fabric, filled with British wool

### Deli Class/Boz

- 18 Always Wanting S'more – personalised s'mores where message can be added
- 19 Blue Daisy Arts – silk wrapped glassware, handmade bags
- 20 Blue Daisy Arts – Christmas decorations
- 21 Nagihan Seymour – handmade and hand painted ceramics, ornaments

### Horsell Evangelical Church – Inside

- 22 Woking & Sam Beare Hospice – handmade craft items
- 23 Flora's Fund, Bone Cancer Charity – handmade Christmas table decorations and wood sculptures

- 24 Woking Creative stitchers – handmade gifts and cards
- 25 Val Thorpe – Artist
- 26 Jan's Fripperies – handmade jewellery and gifts
- 27 Keith Farmer – Family History research
- 28 Ula's Embroidery – handmade embroidery items
- 29 LizeDecor – Christmas decorations
- 30 Elmo – Children's books
- 31 ONAYTB – Old, New and Yet to be items

### Horsell Evangelical Church – Car Park

- 32/33 Vz Collection – handmade jewellery, clothing and accessories
- 34 Horsell Afternoon WI – handicrafts
- 35 Modern Macrame Makes – macrame hangings, pot holders and keyrings
- 36 JLT Crafty Designs – pottery, painted glass, hand sewn Christmas tree decorations
- 37 Krafty Lou Lou – hand sewn bags, crochet items, Christmas gifts
- 38 Mr Tony Wellbelove – woodturning and Christmas decorations
- 39 Ali B Designs Surrey – decorations and printed cards with own artwork
- 40 SAMBER Riding for the Disabled – Christmas gifts, cards and crafts
- 41 Clara Sparkles – accessories and gifts
- 42 Jam Lady of St. Johns – preserves

### Café Primo/Lisa Jones

- 43 Chloe's cakes – homemade brownies, blondies, cookies
- 44/45 Hannah Bruce – Fine Art, scarves with art prints, resin earrings
- 46/47 The Cozy Woodshed – locally sourced wood and bark, hand-painted with birds and animals
- 48 Jane's Hearts and Crafts – decoupage gifts, wood and slate hearts
- 49 Strawberry Patch Crafters – homemade fabric and knitted goods, craft kits

### Between Seymours and Beijing

- 50 Woking Lions and Studio 101 – Father Christmas
- 51 Scouts – Christmas wreaths, decorations and stocking fillers

Love Horsell?

Be its chief cheerleader in our magazine team!



Map/artwork by Linda Russell MR23



## Our local traders are joining in too!

- **Apples & Pears:** stall selling gifts, cards and Horsell Calendar
- **Beijing:** Chinese starters & appetisers, noodles & rice outside
- **Studio 101:** gifts from Father Christmas with Woking Lions
- **Prince & Sons:** burgers & hot dogs from 12 to 4pm outside
- **Squisito Takeaway Kitchen:** freshly cooked pizza slices & pasta bowls

- **Pets Corner:** I-Spy – hunt the animal round the shop
- **Woking & Sam Beare Hospice shop:** special Christmas Sale
- **Horsell Nails & Spa:** 15% off gift vouchers
- **Norsworthys:** 10% off gift vouchers & open till 5pm
- **Sophie Sews:** stall number 12
- **Horsell Kitchen:** food stall on the terrace
- **Lisa Jones:** 10% off gift vouchers
- **RSPCA:** tombola raising funds for RSPCA

- **Café Primo:** Paella and chicken & treats outside
- **Deli Class:** hampers, prosecco, panini, pannetone
- **The Crown:** Thurstons Beer
- **Poppies & Peonies:** Christmassy things in the little room down the secret side path!
- **The Cricketers:** charity stall number 6 – proceeds to Woking & Sam Beare Hospice
- **The Red Lion:** Horsell Charity Chutney
- **Horsell Evangelical Church:** Puppet Show, children's crafts, refreshments

Thank you for all your wonderful decorations and all the "extras"!

## Live music from local performers

### In front of Masala Spice, High Street

- 1.00 to 1.30pm Surrey Ukeaholics
- 1.35 to 2.05pm Horsell Sings
- 2.15 to 2.45pm Salvation Army Brass Band
- 2.50 to 3.20pm Bisley Almac Brass Band
- 3.50 to 4.20pm Bluestone Bills
- 4.30 to 5pm Lost in Surrey

### In the Evangelical Church lobby

- 1.30-3.30pm Saxophone Quartet

### In Front of WSB Hospice Charity Shop

- 3.25 to 3.50 Summerscales Performing Arts



# Horsell Village Christmas 2023

## Meet the Christmas Market Team!

The new, much larger team of volunteers first met in August to start planning. Jobs included booking the stalls and allocating their locations, booking the bands, and involving all the businesses in the High Street. Then, on the day, organising lighting, power, road closure permission, Scout HQ for drying gazebos, posters, publicity, lighting, volunteers for December, accounts... a seemingly endless list! Thank you all for helping to make this a great day for stall holders, village shops and everyone who comes to the market. ENJOY!

## Horsell Christmas Market Sponsors

Horsell Christmas Market is so very grateful to the shops and businesses of Horsell High Street for taking part, having fantastic food stalls and for their generous support and sponsorship. With especial thanks to **Seymours**, **Frazer's Quantity Surveyors**, **KRB Windows**, **Horsell Nails and Spa**, **Hamlyns** and **Heaters Bakery** for their very generous sponsorship donations, and to **Kendall Cars Ltd.** for van hire. To add extra sparkle, **Seymours**, **Woking Funeral Service**, **The Crown** and **Startrite Motors** will display Christmas Trees. There will be a prize for the business with the best Christmas Decorations in their window, donated by **Woking Funeral Service**.



Left: In front of Seymours: Candace Relf, Lynne Digling, Lizzie Judson.

Right: By The Crown: Geoff and Caroline Hughes, Simon and Maria Jackson, Gerry Pearce, Terry Fox.

MOSAIC CHAMBER CHOIR



## A CHRISTMAS MOSAIC

An evening of festive music  
**ST MARY'S CHURCH, HORSELL**  
**SAT 2 DEC | 7.30PM**

Tickets £15 | Concessions £7  
Includes glass of mulled wine or soft drink  
Tickets on the door or book online at  
[mosaicchamberchoir.org.uk](http://mosaicchamberchoir.org.uk)

## ROAD CLOSURE

Meadway Drive to The Crown pub, 1pm to 5pm

The road will be closed from Seymours to The Crown - as on the map! Residents and businesses will be affected and there should be no deliveries or access to the closed section of the High Street during the afternoon, except for emergency vehicles.

# TREE SURGEONS AND LANDSCAPE GARDENERS BASED IN HORSELL

Crown Raising  
Crown Thinning  
Pollarding  
Tree Felling  
Hedge cutting

Stump Grinding  
Deadwooding  
Emergency Services  
Tree Planting  
Hard Landscaping

Soft Landscaping  
Fencing  
Patio  
Decking  
Turfing

01483 361 123 • [info@treeclinicsurrey.co.uk](mailto:info@treeclinicsurrey.co.uk)



TREE CLINIC SURREY

GARDEN CLINIC SURREY



Contact us for your free quotation

# Horsell Volunteers

## Paul Bowyer – From Pole to Pole

Our volunteer of the issue is Paul Bowyer. He's long been a stalwart of village events and is known to be behind the scenes when things happen!

Paul first became involved with local affairs when he joined a campaign back in 2006 against the installation of a mobile mast in Horsell Way. Sadly, the mast was put in anyway but, luckily, Paul decided to extend his involvement in Horsell life and is now an invaluable member of the large army of volunteers who help keep our village events and sites going. Principally, he is the Chairperson of the Trustees of Horsell Village Hall (HVH), overseeing the bookings, maintenance, and accounts.

Candace Relf, who works alongside him in this endeavour says, "The hall would quite simply not survive without Paul's dedication, good humour, and patience. The pavement between his home and the hall must be worn out with him going backwards and forwards turning on sound systems, turning off sound systems, checking lights, running a keen eye over the cleaning operation, organising maintenance programmes. It never stops. He is a joy to know, a calming influence, and he introduced me to Thurston's beer for which I will forever be grateful."

Paul also has an agile finger in many other pies as well, serving on the HRA committee, as well as on the committees that maintain the Sports Field on Brewery Road, and the grounds of HVH, plus that of the Horsell Village Show. And, as if that weren't enough, Paul also kindly gives over his garage space four times a year to store all the copies of this magazine, sorting them into the 50+ piles ready for delivery into our homes.

Our Chair of the HRA Alan Taylor says of him, "Paul is the most obliging, responsive, and helpful person one could wish to work alongside. He appears always to be available to help out where he can. A recent example of this is when the HRA Committee wanted to replace the flagpole adjacent to the war memorial. He was there for all our meetings with the supplier, the site survey, and the delivery. He also established a secure storage area for the flagpole, flags, and accessories. When the flag is flying on special occasions you can be sure that he is the person up early hoisting the Union Flag. I feel fortunate that Paul is such a dedicated HRA member. Thank you, Paul."

Paul points out that Horsell is a village with an awful lot going on and that it is often the volunteers that keep it all running smoothly. But he acknowledges that it's an aging group of people that could really make use of some young blood. If you have some time to give to

our local events and facilities, you can contact Paul on 07493 669977 or [paul.bowyer4@virginmedia.com](mailto:paul.bowyer4@virginmedia.com)

While that is very true, we still want to say a huge 'thank you' to Paul.

If you have a nomination for our village volunteer of the issue, please get in touch!



Paul outside Horsell Village Hall.



**Woking**  
Funeral Service

Est. 1880

### Woking Funeral Service

are here to support and guide you. We offer a friendly, professional service to families.

- 24-hour service
- Bereavement advice
- Transparent pricing
- Private chapel of rest
- Floral tributes
- Memorial masonry
- Home visits
- Prepaid funeral plans

**Call us for immediate support,  
advice or to arrange a home visit.**

119-121 Goldsworth Road,  
Surrey GU21 6LR  
24hr ☎ 01483 772 266

78 High Street,  
Horsell GU21 4SZ  
24hr ☎ 01483 910 070

8 Anchor Crescent,  
Knaphill GU21 2PD  
24hr ☎ 01483 397 998

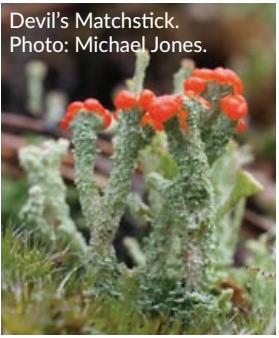
[wokingfunerals.co.uk](http://wokingfunerals.co.uk)



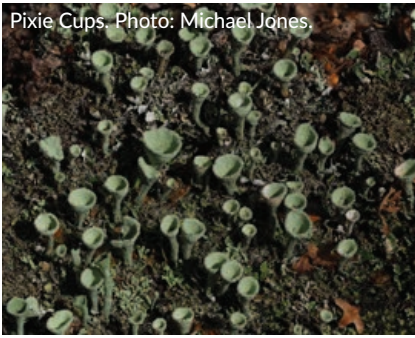
# Winter on the Heath



**Our Amazing Heathlands**



Devil's Matchstick. Photo: Michael Jones.



Pixie Cups. Photo: Michael Jones.



Gorse. Photo: Michael Jones.

Winter on the heath is a relatively quiet time, but there's still lots to discover on a heathland visit!

If you keep your ears to the sky, you are likely to hear the tseeps and cackles of flocks of redwings and fieldfares as they move across

chilly grey skies on the hunt for their next berry-filled meal. These wonderful thrushes visit the UK from Scandinavia and can often be found in large numbers.

If you can combine listening skywards with looking downwards, you might just spot some of heathland's smallest organisms. Fabulous lichens – a complicated commingling of fungus and algae – are easier to spy when plants start to recede in the colder months. Wonderfully named species like Pixie Cups and Devil's Matchsticks can be found in less vegetated areas and around tree stumps. Definitely worth the effort to seek out.

If invertebrates are more your thing, it's worth spending time purposefully loitering around gorse bushes. Particularly on winter days, the bright yellow, coconut-scented flowers may tempt flying insects – awoken from their winter hideouts – to stop by for a sip of nectar. With very little else in the way of flowering plants for competition, watching gorse is a sure-fire way to meet, at the very least, a hoverfly or two. Look closer into the depths of the spiky foliage and you are likely to spot some spiders too.

By this point, if you still haven't found a Dartford Warbler on your heathland wander, they can often be found near gorse. They rely heavily on eating the bounty of spiders contained within, so your efforts to stop and spend a few moments in the vicinity may be rewarded with a glimpse of one of our rarest birds.

## 2023 – a look back

My exploits as Thames Basin Heaths Partnership's Education Officer this year have seen record numbers of children engaging with their local heathlands. Lots of schools have got involved in helping to spread the word about how we can all look after our amazing heathlands. I have done assemblies, in-class sessions and arranged visits to wonderful places like Horsell Common. Children have loved learning about fabulous ground-nesting birds, special butterflies and solitary bees and wasps that can often be found on no other habitat. They have been excited by a rare landscape on their doorsteps and helped people #BeWildfireAware. I thank everyone for their enthusiasm. Here's to more heathland adventures in 2024!

## Get involved!

If you'd like to connect your children (or yourself!) with local wildlife, please get in touch as we offer a variety of free, fun sessions for schools and community groups – both inside and out on the heath.

If you need any persuading to join in, one of my favourite quotes from a child this year was "Thank you for teaching us about wildlife and nature. I liked it when you said 'don't sniff the spiders!'"

Michael Jones

Education Officer – Thames Basin Heaths Partnership

[tbhschools@naturalengland.org.uk](mailto:tbhschools@naturalengland.org.uk)

[www.tbhpartnership.org.uk/schools](http://www.tbhpartnership.org.uk/schools)

**FUNERAL DIRECTORS & MEMORIAL STONEMASONS**

Robert, Chris, Andrew & Michael Lodge

## OUR FAMILY HELPING YOUR FAMILY

For over 240 years, eight generations of the Lodge Family have been privileged to help local families in their time of need.

We provide all funerals, whether modern, traditional, green or alternative, with care and compassion.

**WOKING**

48-54 Goldsworth Road,  
GU21 6LE

01483 768942

*"The staff at Lodge Brothers have been sympathetic, understanding and supportive. They were with us every step of the way throughout a very difficult time and we are and will be forever grateful for their support."*

★★★★★  
Mr Robinson

**Lodge**  
BROTHERS 1780  
*the family you can turn to*  
[www.lodgebrothers.co.uk](http://www.lodgebrothers.co.uk)

ASK ABOUT OUR PRE-PAYMENT FUNERAL PLANS

FLORAL TRIBUTES • FUNERAL PLANS • WILLS & PROBATE

## ROSS LANDSCAPES LTD

01483 763771

Complete landscape services including.....

■ Block paving	■ Brickwork
■ Driveways	■ Water Features
■ Patios	■ Turfing and Fencing

[www.rosslandscapes.co.uk](http://www.rosslandscapes.co.uk)

# Horsell Gardens



Avoid planting winter and early spring flowering plants in east-facing aspects. Photo: Pam Barden.

With last winter being the coldest we've had for many years and lots of us sadly losing plants in the week-long freeze we experienced, we need to consider how we put our gardens in a better position this year should we have another harsh winter.

Understanding the hardiness rating of plants will help you to select plants which will come through the winter unscathed. The range goes from a very hardy H7 at one end, taking temperatures colder than -20 °C, down to H1a at the other end of the scale. This would be plants that need a heated tropical glasshouse. Permanent garden plants should be selected from H7 to H4 ratings. Anything H4 is borderline hardy (to about -5°C), so should have a mulch of compost or leaves over the roots to act as an insulating blanket.

Evergreens, unlike deciduous plants, will be more affected by low temperatures as they are still growing slowly through the winter months, drawing moisture from the soil. When the soil freezes, the water supply runs out. With this in mind you might have to think about watering evergreens occasionally through the winter.

In east-facing aspects, avoid using borderline hardy plants or any plant that flowers very early in the year, such as Camellia and Magnolia. Cold and frosty spring nights are often followed by a bright and sunny morning. If buds thaw too quickly, the internal structure can be damaged and they will

blacken and fall. Climbers and the blossom of fruit trees may be especially prone to frost if grown against an east-facing wall.

Container plants are even more vulnerable to the cold than those in the ground. With their roots above the soil surface, frost can penetrate through all sides of the container. Grouping pots together means that plants can help to shelter each other. Ensure that pots don't sit with saturated soil – try moving them next to a house wall or fence. Remove any trays from underneath and place the pots on feet so they are not on wet ground. Ceramic or terracotta pots can be wrapped in bubble wrap, hessian or fleece to protect them from cracking.

Anything tender in containers should be moved into a greenhouse or conservatory to overwinter under glass. If that's not possible, then position against a south-facing wall.

Any plants in the ground which may be prone to damage can be wrapped in a double layer of horticultural fleece. Leaving the top layer of foliage on more tender plants such as Penstemons and Salvias offers them some protection. Frost may lift autumn-planted shrubs out of the ground, so check regularly and re-firm the soil around them if need be.

Pamela Barden, Painted Fern Garden Design



Evergreen plants continue to grow over winter so may need an occasional watering. Photo: Pam Barden.

HALSTEAD ST ANDREW'S SCHOOL

A PARTNERSHIP TO FORM  
**THE SCHOOL OF THE FUTURE FOR WOKING**

An independent co-educational school for ages 2-16

To find out more or to book a visit, go to our website:  
[www.hsaschool.co.uk](http://www.hsaschool.co.uk)

**euronics**  
the home of electricals

**SALE NOW ON!**

Price Match Guarantee | Super Service  
Expert Knowledge | Contact-Free Delivery

Terms and Conditions apply. Sold as an agent of Euronics Limited. All rights reserved. All offers are subject to availability while stocks last. Delivery and installation charges may apply. Exclusions and radius apply. See in store for full details. Images for illustration purposes only. Copyright Euronics 2023. E&OE 2023.

**BOSCH**  
Invented for life

**1400 Spin 7kg Washing Machine**  
WAJ28001GB

- 13 Programmes incl. quick wash
- EcoSilence drive
- Reload function, delay start
- Dimensions: H84.8 x W59.8 x D54.6cm

Only **£419.00** | 2 Year Warranty  
B Energy Rating

**RSM**  
Domestic Appliances  
FRIENDLY SERVICE • BIG SAVINGS • FAST DELIVERY

**YOUR LOCAL DOMESTIC APPLIANCE SUPERSTORE**  
1-2 Albion Parade, High Street, Knaphill, GU21 2PS  
Also in Guildford • Ashted • Bookham • Epsom Downs  
Call 01483 475000 [www.rsmdomesticappliances.com](http://www.rsmdomesticappliances.com)

# Horsell History

Are you well organised?  
Partial to a glass of wine –  
or tea and cakes?  
You sound like our new Editor!

## Barbara Whitchurch Freire-Marreco 1879 -1967

### A trailblazer from Horsell



Barbara Freire-Marreco with her fellow students Francis Knowles and JA Harley, and her tutor Henry Balfour (centre). Image from item 1998.66.3 Copyright University of Oxford, Pitt Rivers Museum.

Barbara Whitchurch Freire-Marreco was born in Richmond in 1879. Her father, Walter Freire-Marreco, was originally from Portugal. He was born in 1849 in Lisbon. By 1861 Walter's family had moved to Northumberland and in 1878, the year he married Gertrude, he was naturalised. The 1881 census shows Walter, a chartered accountant, and Gertrude together with daughter Barbara, aged one, and two servants living in Riverside House, Chobham Road. In 1882, a brother, Geoffrey, was born and the next year the family moved to a newly built house in Bury Lane, Horsell, named Berton Hatch.

Barbara was educated at Guildford High School, founded in 1888, and was registered there in September 1893 as the 204th pupil with fees of four guineas (£4.20) a term. An outstanding pupil, by 1897 Barbara was top of the Cambridge Local Schools French examination for the United Kingdom. In the same year a report of the school's prizegiving tells us that Barbara also won the Upper V form prize and those for Divinity and conduct.

After a brief stay at Park Road in 1898 the family moved to Potter's Croft, Albany Road, now better known as Halstead St Andrews School and the road as Woodham Rise.

In 1902 Barbara went to study at Oxford's Lady Margaret Hall, founded in 1878 as the first college for women and named after Lady Margaret Beaufort, who had lived in Woking Palace. She started by gaining a first-class honours in Classical Moderations – for which she learnt Greek in six weeks. After this she took the diploma in Anthropology becoming the only woman member of the first Oxford class of anthropology students, earning a distinction in 1908. Barbara was thus England's first trained female anthropologist. Her dissertation, titled 'Notes on the hair and eye colour of 591 children of school age in Surrey', was published in 'Man' in 1909. This included 84 children (54 boys and 30 girls) from Horsell school and concluded Horsell children had mostly 'medium' eyes and fair hair.

Potter's Croft was still home to the Freire-Marreco family in 1911 with Barbara, her parents and four servants listed as the occupants. Barbara is described as a research fellow at Somerville College, Oxford. She studied there between 1909 and 1913 researching the 'nature of authority of chiefs and kings in uncivilized society' and was awarded a £200 travelling scholarship by the College in 1911 to continue her work overseas, while at the same time registering as a student at the London School of Economics, where she later taught. Thus, Barbara was able to live in Santa Clara, New Mexico amongst the Pueblo peoples in 1910 and again in 1913. As such, she was the first English female anthropologist to do fieldwork in the United States. To further fund her studies, Barbara sold some of the items she acquired to the Pitt Rivers Museum in Oxford where she worked as a volunteer preparing card catalogues of the amulet collection, whilst also teaching the Anthropology Diploma. She gave 845 artifacts from many countries to the museum between 1905 and 1962, including earplugs from Zanzibar.

Described affectionately as 'a tall black-haired woman with a handsome aquiline nose, and as a warm sincere friend', Barbara remained in touch with her Woking roots becoming secretary of the Woking War Emergency Committee in 1914. Based at Woking's Council Offices the aim was to provide help during wartime, such as an appeal for local people to do laundry for soldiers. In 1917 she gave a series of lectures arranged by the Woking WEA on 'uncivilised peoples', held at the Soldiers' Recreation Room in Commercial Road, which later became the site of the Atalanta Ballroom and is nowadays approximately where Robert Dyas stands.

In 1915 Barbara joined the editorial staff at the War Trade Intelligence Department where she met her future husband, Robert Aitken. They married at All Saints' Church, Woodham on 21st April 1920. The wedding was very quiet with no reception as the bridegroom's family

## Alan Greenwood & Sons

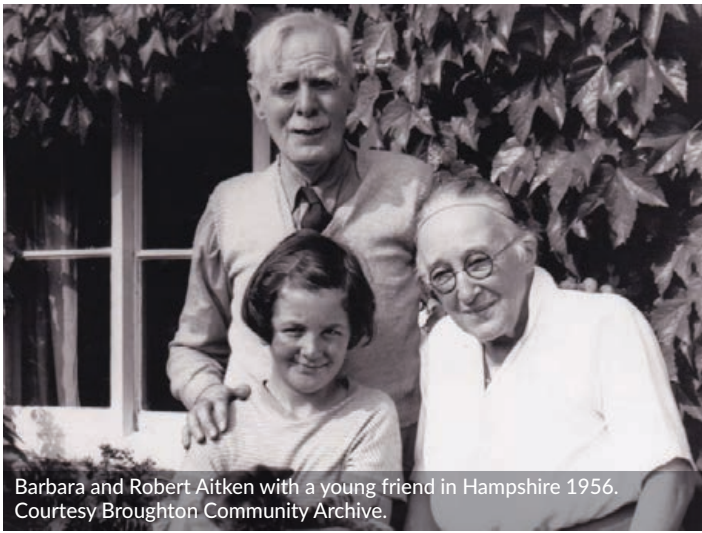
Independent Family Funeral Directors



*Caring and Compassionate Service 24 hours 365 days*  
*Latest Jaguar or Mercedes Funeral Vehicles*  
*Golden Charter Pre-paid Funeral Plans*  
*Home Visit Arrangements*  
*Everything you would expect from a Funeral Director*  
*We will not be beaten on price*

Mimbridge Garden Estate Station Road Chobham GU24 8AR <b>01276 858363</b>	2 Aldershot Road Woodbridge Hill Guildford GU2 8AF <b>01483 567845</b>	5, The Parade Frimley, Camberley GU16 7HY <b>01276 684 650</b>
66 Send Road Send, Woking GU23 7EU <b>01483 210 222</b>	14 Guildford Road Bagshot GU19 5JH <b>01276 473 707</b>	1 Anchor Hill, Knaphill, Woking GU21 2HL <b>01483 487889</b>

Visit Our Website for Full Details of Our Services and to View All Our Local Obituaries  
[www.alangreenwoodfunerals.com](http://www.alangreenwoodfunerals.com)



Barbara and Robert Aitken with a young friend in Hampshire 1956. Courtesy Broughton Community Archive.

She died in November 1967 aged 87, her husband predeceasing her in 1965.

Barbara's parents and a sister Phillis, who died aged one in 1886, are buried in St Mary's churchyard, Horsell. Her nephew, Anthony Freire-Marreco, was Junior Counsel at the Nuremberg trials, and later a founding director of Amnesty International. He died in 2006.

Mary Ellen Blair has written a book on Barbara entitled 'A life well led'. Barbara's life was that indeed.

*Richard and Rosemary Christophers*

*Other sources: FindMyPast and Ancestry online for censuses, births, deaths and marriages. Obituary in 'Folklore' vol. 78, no. 4 (1967). Article by Alison Petch in the 'England: the other within' project of the Pitt-Rivers Museum at <https://web.prm.ox.ac.uk/england/englishness-Barbara-Freire-Marreco.html> the source of the earlier portrait of Barbara. Wikipedia articles on Barbara and Anthony.*

had been recently bereaved, but the church was full. Barbara was so well known for all she had done for Woking.

After her marriage, Barbara joined the Folklore Society, becoming secretary between 1926-28 and writing many articles reviews and letters for the society's magazine 'Folklore'.

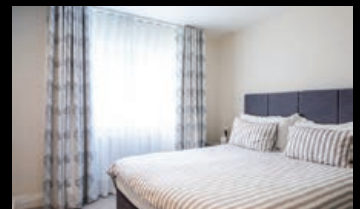
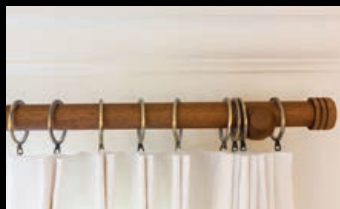
The Aitkens made their first home in Hampstead and continued to travel, mostly to Spain. The marriage was a very happy one with the couple buying a cottage in Broughton, Hampshire in 1928. There they lived a simple life, reading after dinner and sometimes conversing in Latin, and contributed articles to local magazines on local life and customs. They did not have a car and submitted to electricity only when their house was nearly burnt down by an oil lamp. For many years Barbara was confined to a wheelchair because of arthritis but this did not stop the Aitkens - Barbara belonged to the Women's Institute and a chiropody clinic was regularly held at their home. She was remembered in the village for her work in connection with old people and finding foster homes for children.



Potter's Croft, later Halstead St Andrew's School in 1947. Courtesy of Halstead St Andrew's School.

# Sophie Sews

CURTAINS | BLINDS | INTERIORS



**Renovating or refreshing your home?**

**Experience the best in bespoke, made-to-measure soft furnishings. Call now for an in-home design consultation or visit our shop in Horsell.**

**Let Sophie Sews turn your interior vision into a stunning reality.**

**76 High Street, Horsell, Surrey, GU21 4SZ**  
**01483 598056 [www.sophiesews.com](http://www.sophiesews.com)**



# See more, with Seymours



Discover our revolutionary  
off-market property  
search engine, for buyers  
who can't find their dream  
home on Rightmove.



Scan the **QR code** to discover our  
revolutionary off-market search engine:

**[seymours.homesearch.co.uk](https://seymours.homesearch.co.uk)**

Seymours Horsell | 01483 755222  
[seymours-estates.co.uk](https://seymours-estates.co.uk)  
87 High St, Horsell, Woking, GU21 4SY

