

Free! Produced and distributed by volunteers to the 4,200+ households of Horsell

THE *Resident*



The magazine of Horsell Residents' Association

Winter 2022

INSIDE THIS ISSUE

Christmas at
the Hospice

Design a flag
for Horsell

Looking deeper
at Horsell's soil

Horsell
Christmas
Market
full guide inside

theresidenteditor.wixsite.com/magazine
www.horsellresidents.com

Christmas Tree Festival at St Mary's Church, Horsell 2021. Photo: Cheryl Catton

A word from the editorial team

Greetings...

One thing I love about putting the winter magazine together is that it always makes me feel warm and fuzzy about living in Horsell. Just going through all the possible photos for the front cover reminded me of the fun and friendliness that is Horsell village when we come together to put on an event like the Horsell Christmas Market or St Mary's Christmas tree festival. We had lots of possibilities this year because one of our local photographers, Cheryl Catton, had very kindly spent last year's market taking photos for us. Thanks again for that, Cheryl.

The market and the festival are really good examples of how Horsell is 'powered by volunteers' but we do need more of you. Take this magazine: Linda, Sue and I enjoy editing all the content sent in and are very fortunate to have lots of people to help out like Sarah Davidson and Ann Tilbury who will go and research and write a piece for us. Michael Jones and Pam Barden write their pages four times a year, sending beautiful photos to go with their interesting information about Horsell's natural world. We've also

got Graham Barden who will reply to an email asking if he's got a photo of Thurston's Brewery with a photo he just went out and took for us. I haven't even mentioned the historians, the proof-reading team or the road stewards who post the magazines through letterboxes.

What I'm trying to point out, albeit in a clumsy way, is that we could do with more help but it really can be as much or as little as you like. It can also be for whatever skills set you can offer - yes, the magazine would welcome more people on the team, but HRA itself would welcome someone with social media knowledge and HRA's Second Thursday Club could do with more people who will help with the practical side of things such as putting up and/or taking down gazebos. Even if you can just spare an hour, that would really help to fuel our volunteer power.

Please do drop Alan Taylor (ajrolyat@gmail.com) or me (theresidenteditor@gmail.com) an email if you want to find out more.

Lucy

Calling Horsell volunteers

Join the editorial team!

This magazine is written and produced by volunteers. Lucy, Sue and Linda would love more people on the editorial team so we can share the load a bit more. There are only four magazines a year and you can take on as much or as little as you can fit in. You need to have good communication skills and be able to use Microsoft Word to edit submissions. It will also help if you're happy to meet for a cuppa every now and then! Do get in touch with Lucy at theresidenteditor@gmail.com to find out more.

Do you like social media?

HRA is looking for a volunteer social media manager to help us develop our content and extend our reach. If you are interested, we'd love to hear from you. Contact: Adrian Beesley email adrianbeesley@horsellresidents.com

The Resident – Horsell Residents' Association's magazine about and for our village.

Editor: Lucy English theresidenteditor@gmail.com **Editorial team:** Linda Russell and Sue Waters.

Advertising co-ordinator: Ian Berry theresidentads@gmail.com

NEXT ISSUE: Spring 2023

Advertising deadline: noon Sunday 14th January

Copy deadline: noon Sunday 22nd January

Articles and photographs about our village are welcomed from our whole community.

THE *Resident*

Published by **Horsell Residents' Association Limited**

Registered charity (1162487) and limited company (05377490)

Horsell Residents' Association

CONTACTS

President: Dorothy Smith
dorothy@andover.co.uk

Chair: Alan Taylor
ajrolyat@gmail.com

Hon. Treasurer: Carol Cheesman
CarolC@Cheesman.co.uk

Membership Secretary: Geoff Hughes
membership@horsellresidents.com

Director & STC co-ordinator:
Lizzie Judson
secondthursdayclub@horsellresidents.com

Why not support the association that supports you?

Become a member of HRA and help to support our village projects. See www.horsellresidents.com for full details of our aims and benefits.

Annual household membership is £5 by standing order or just pay £50 for lifelong household membership.

To download a membership form go to: www.horsellresidents.com/home/JoinUs or email info@horsellresidents.com.

Text and photos copyright individual authors and photographers as named.

Printed by: Woking Print, The Printworks, St John's Lye, Woking, Surrey GU21 7RS. Tel: 884884
Email: sales@wokingprint.com

Artwork by: TBB Design.
Tel: 829185
Email: tim@tbbdesign.co.uk
www.tbbdesign.co.uk

No responsibility for the quality of goods or services advertised in this magazine can be accepted by the publishers or printers. Advertisements are included in good faith. No part of this magazine may be reproduced in any form whatsoever without the prior permission of the Publishers. The Publishers do not necessarily agree with the views expressed by contributors, nor do they accept any responsibility for errors of interpretation in the subject matter of this magazine. All reasonable care is taken to ensure accuracy in preparation of the magazine but the Publishers cannot be held legally responsible for errors in the articles or the return of unsolicited manuscripts, artwork, or projects. Whilst every care is taken, no responsibility can be accepted for the safety of material submitted.

Horsell Happenings

View from the Chair



We have experienced great joy and then sadness within a three-month period.

Our joy was marked by a community celebration of Queen Elizabeth II's Platinum Jubilee with our picnic on the green in June.

Then on 8th September we received the sad news of the Queen's death at Balmoral.

In turn we were able to mark the jubilee celebration by flying the Queen's Jubilee flag from our newly acquired flagpole and then respecting her death by flying the Union flag at half-mast. It was also touching to see the flowers laid by residents who shared in the sorrow.

A Horsell reflection of this time is on page 5 of this magazine. But looking forwards, it's a reminder of the role of our new flagpole and of Horsell Residents' Association (HRA)'s "A Flag for Horsell Competition" running throughout the winter which is open to all. Individuals, schools, Guides, Scouts and other community groups are all welcome to make an entry. See below for details.

On a happier note, we have been fortunate that we have been able to fulfil our whole programme of events. We hope that we can expand our fun Flowerpot Festival which runs during the summer school holidays into something more community inclusive and are looking for someone who would be interested in organising this in the village. If this interests you, please contact me for more details.

HRA's Second Thursday Club (STC) team has been busy planning for the Horsell Christmas Market to be held in the High Street on Saturday 3rd December. It is intended to build on the successful event from last year both for traders and the association's chosen charities. Traders' stalls are now allocated and there is a waiting list such is its popularity. It is always resource intensive on the day erecting (and dismantling) gazebos and marshalling the public to make it a safe environment. All offers of help will be appreciated. Please contact me if you can assist or email xmas@horsellresidents.com.

The thought of Christmas brings me back

to Queen Elizabeth II and her wonderful Christmas messages to the nation and the Commonwealth in which she always spoke about love and peace. Horsell residents do not need to span such big geographical boundaries but can deliver this message with words and actions this Christmas to our neighbours. Why not remember one who might be alone, lonely, or less fortunate than ourselves and drop them a Christmas card with a message of encouragement?

Wishing you all a wonderful Christmas, however and wherever you will be celebrating.

Alan Taylor (Chair, HRA) ajrolyat@gmail.com

Horsell Charity Calendar 2023

£8

Ideal stocking-filler!

Did you know?
The Horsell Charity Calendar contains not just details of local events, but also items of general interest.

Calendar produced by:

Second Thursday Club
Horsell Residents' Association
Powered by volunteers
horsellresidents.com

Raising funds for:

- RDA - It's what you can do that counts
- SAMBER
- WTN
- YOUR SANCTUARY - FOR LIFE WITHOUT PAIN
- im - INTERGENERATIONAL MUSIC MAKING - Generations of Music

Get yours from:
Premier,
Apples & Pears,
Squires and St Mary
the Virgin Church

HRA Competition: Design a flag for Horsell

There is still time to send in your entries for the competition to design a Horsell flag. HRA will have the winning submission made up into a flag and will fly it on our flagpole on special days. Please take note of these parameters:

- The background of the flag should be a bright colour reflecting the warmth and friendliness of our community.
- The flag design should be simple, clear and distinctive.
- The flag must be identifiable by its design to be significant to Horsell.
- Please include a short explanation of your design and colour choices so we understand how the flag links to Horsell.
- The flag proportions should be 2:3, for example 24 x 36 inches or 40 x 60 cm.
- The competition will run through winter. We want to have the winning flag manufactured and flying in the spring of 2023.
- Residents may submit up to two designs.
- Email your designs (and any questions) to horsellflag@horsellresidents.com.

Alan Taylor, HRA Chair

HRA Horsell Residents' Association Ltd Powered by volunteers

Horsell Christmas Market 2022

We need YOUR help!

26th and 27th November:
Decorating and installing Christmas trees - some ladder climbing needed

Friday 2nd December 2pm:
Shifting heavy blocks and gazebos

Saturday 3rd December 7am to 8pm:
(rota system)
Setting up gazebos, electric lighting, tables and chairs - and taking it all down again!

Sunday 5th am and Monday 6th am
Packing and storing plus return all heavy materials

How can you help - and when?
Please let us know at: c.e.hughes@ntlworld.com

10 years of Thurstons

A Good Brew

It was in October 2012 – ten years ago – that Thurstons Brewery was formed at The Crown.

If that's a surprise, perhaps it's because the brewery itself looks old, as does The Crown, which has served Horsellians for over 150 years, and the presumption is that both have been there for ages.

The brewery was formed to produce an occasional brew for The Crown with a ¼ barrel plant in the kitchen of the pub. A meeting with an old friend, Ed Wray, who just happens to be a microbiologist and master brewer, led to further work which then led to the Woking Beer Festival asking them to supply their first beer: Stedman's Ale. Stedman was the local brewer from which Brewery Road takes its name.



John contemplating his brew.
Photo: Cheryl Catton.

Thurstons Brewery itself takes its name from Ed's previous girlfriend's surname. He always thought it was a good name for a brewery. As John explains, she then left him so he lost the girl but they got to keep her name.

This first appearance at the festival with their first beer resulted in their first award: third overall. With such encouragement more beers followed: Maltway, Festival Ale, Milk Stout, Horsell Gold and Horsell Best. These last two soon became the mainstay beers. They took Gold and Milk Stout to the 2013 Beer Festival and both beers won their class. The Stout went on to win the Gosport Winterfest. Demand was such that a 4.5-barrel plant was built next to the pub. Work started in January 2014 and the first brew was completed on 9 May 2014.

Ten years later and there are more beers and now a gin. All have interesting names and interesting information on the bottle labels. Chobham Treacle tells the drinker about the famous treacle mines at Chobham. Horsell



Thurstons Brewery. Photo: Graham Barden.

Invader – that's the tripods from Mars. For Christmas how about No-Ale? Also available according to season is Horsell Hop, using home grown hops. Time Machine is described as an old ale with "strong echoes of the past – lay it down for the promise of the future". The gin isn't just any gin with a list of added botanicals: it lives up to its name Horsell Un-Common Gin. With Thurstons you don't just whet your whistle, there is wit too.

Ann Tilbury



Inside Thurstons Brewery. Photo: Thurstons Brewery.

TRADING IN SURREY FOR OVER 50 YEARS

First choice for domestic appliance repairs and service

- Fixed call-out
- Fast response
- Built-in / freestanding machines

Call 01483 539531

FRIENDLY SERVICE • BIG SAVINGS • FAST DELIVERY

www.rsmdomesticappliances.com

FRAZERS SURVEYORS

Your Local Chartered Surveyors

- RICS HomeBuyer Reports
- Building Surveys
- Valuations
- All Types Of Buildings
- Over 30 Years Experience
- Call Or Visit Us Today For A Competitive Quote

Frazers Surveyors Ltd
Thornash House, 37 High St, Horsell, GU21 4UR
T: 01483 730909 E: surveying@frazers.co.uk
www.frazers.co.uk

Big Phil COMPUTERS

Finding the solutions to all your computer and mobile device problems.

- All versions of Microsoft Windows & Apple operating systems installed and repaired.
- Mobile phone and tablet recommendations & set-up. Virus removal, home networking, internet security & PC or laptop upgrades. PC's tailored to your requirements, hardware & software recommendations made.

Mobile: 07836 711866
Landlines: 01932 348096
01483 661555
01276 539236

Web Site: www.bigphilcomputers.co.uk
Email: phil@bigphilcomputers.co.uk

With new single level facilities we are able to provide IT services for all disabled customers that need wheelchair or mobility scooter access.

Areas Covered: Addlestone, Bisley, Brookwood, Byfleet, Chobham, Cobham, Guildford, Horsell, Knaphill, Lightwater, New Haw, Ockham, Pyrford, Ripley, Send, West Byfleet, West End, Weybridge, Windlesham, Woking & Woodham

Queen Elizabeth II

According to official figures HM Queen Elizabeth II's funeral service was watched on television by 29.2 million people. In that number are many Horsell residents who watched in their homes or with others at Horsell Kitchen or The Red Lion. Some residents went to London or Windsor to watch the funeral procession for themselves.

Even before that procession, Darren Sherwood attended the Lying-in-State at Westminster Palace and was interviewed by Sky News and BBC Breakfast. Darren explains: "We were watching it on TV and thought we should be there in person. We would regret it if we didn't. The Queen was a real constant in our lives. We queued for 12 hours. My daughter, Hester, slept for eight of those! But we will never forget the experience."



Lifetime Horsell resident, Ann Tilbury, also went to the Lying-in-State with her family. She also went to Windsor to watch the procession with her two elder daughters and one of her granddaughters. She told me that "The views along the Long Walk were perfect. We ended up next to the rails at just the point where the procession joined the Long Walk. We saw it all. Everyone was friendly and chatty. All were wanting to pay respects and be part of history. This was not only history in the making, but us being part of that history."

Hilary Sellars was also present at Windsor for the funeral procession. Hilary explained: "I arrived by 6am, and I walked up the Long Walk just as the sun rose. I found a spot where I could see the huge screen and the funeral procession. As the time arrived for the cortège to process down the Long Walk the cannons began to fire and the crowds fell silent. It was very moving. I felt like I was one of the last people to see the Queen as she passed through the gates."

Callum, General Manager at the Red Lion, said: "We really wanted to honour the Queen and have the community at our centre so we decided to open our doors to anyone on their own or those who simply wanted to join others to celebrate the extraordinary life and reign of Queen Elizabeth II.

"We couldn't have asked for a better collection of customers to share such a momentous occasion. The atmosphere was one of pride and joy mixed with quiet reflection. It will be a moment all the staff here will remember."

Horsell Kitchen, also didn't want anyone to be on their own. "We had a family join us who didn't have a TV, a gentleman with his carer and his family who all watched it together as well as other residents. We provided free drinks and food. It was important to us that no one felt they had to be alone on such an emotional day."

Sarah Davidson



Because your child deserves to be nurtured

A supportive community that nurtures individuality and confidence.

ST. ANDREW'S SCHOOL-WOKING INDEPENDENT DAY SCHOOL FOR GIRLS & BOYS AGED 3-13

Next Open Mornings: Friday 10th March 9am - 11am, Friday 12th May 9am - 11am. Register Now for 2023, 2024 and beyond.

Please register your interest online:
W: www.st-andrews.woking.sch.uk
E: admissions@st-andrews.woking.sch.uk
T: 01483 760943

~ Developing potential for life ~

@StAndrewsWoking @standrewsschoolwoking @standrewsschoolwoking

Horsell Community Choir
Christmas Concert
Fri 16th December
St Mary's Church, Horsell, GU21 4QQ
at 7.30pm (Doors 7pm)
Tickets £10 (under 14s free) on the door or email:
geoff.hughes@horsellsings.org.uk
Profits will be donated to a local charity

Christmas at the Hospice

Woking and Sam Beare Hospice and Wellbeing Care – celebrating 25 years of care

Thank you for supporting your local hospice charity and enabling us to deliver the care that is so needed across our local community.

Woking & Sam Beare Hospice and Wellbeing Care deliver care 365 days a year and hospice care doesn't stop over Christmas. Our staff and volunteers continue to work throughout the festive period in patients' homes and here on our in-patient unit to provide care and support to our patients and their families, allowing them to spend precious time together making treasured memories.

Our teams of nurses, doctors, therapists and other health care specialists work hard to ensure that every day is special – not only at Christmas – and it's your support that helps make this possible. Without this, we would not be able to deliver our care or support the patients and their loved ones that need our help. We are grateful to everyone who has been able to continue to support us this past year, something we as a charity rely on.

With many ways to give a gift we would like to thank you for making a donation to your local hospice. On behalf of our staff and patients, we wish you a happy Christmas with your

loved ones, no matter where you are and what you do.

The difference you can make

Did you know for every £89 we can cover the cost of 1 visit from the community team, to one of the many patients we care for over the course of a year?

If you would like to consider making a donation, please visit wsbhospices.co.uk/support-us/get-involved/donate/

Find an event near you

For up-to-date information on all events visit wsbhospices.co.uk/events

Visit wsbhospices.co.uk/25 to find out more about our history and to register for an event near you.

Jean Wharton, Press Officer,
j.wharton@wsbhospices.co.uk



PROFESSIONAL AND COURTEOUS TREE SURGEONS



NOW is the best time of year to have your trees cared for (dormant season and no nesting birds).

We are locally based, here in Horsell village.

01483 361 123 ◦ info@treeclinicsurrey.co.uk



traders4u.co.uk

Contact us for your free quotation



TREE CLINIC SURREY
GARDEN CLINIC SURREY

We Also Offer Landscape Services

Horsell village *this* Christmas

Horsell Christmas Market

Horsell High Street

Saturday 3rd December

1pm - 5pm

Father Christmas

Teas

Children's crafts

Craft stalls

Street food

Local bands

Prince's famous burgers

Thurstons Horsell Gold

The Cricketers mulled wine

Puppet show in the

Evangelical Church

Fundraising stalls



Christmas tree Festival

St Mary's Church

Friday 2nd December

2.30pm - 6pm

Saturday 3rd December

10am - 5pm

Christmas Fair

The Horsell Village School

Saturday 3rd December

12pm - 3pm

xmas@horsellresidents.com

Parking will be limited



Second Thursday Club
Horsell Residents' Association
Powered by volunteers



Horsell Christmas Market 2022

Saturday 3rd December 1pm to 5pm

This will be our 10th Christmas Market, organised by the Horsell Residents' Association Second Thursday Club. Have a great afternoon buying unique Christmas gifts, sipping mulled wine, tasting Indian savouries, getting your face painted and listening to the bands.

Better still – GET INVOLVED! Help is needed in many ways:

Saturday & Sunday 26th-27th November: collect and decorate a Christmas tree, deliver to the High Street, and help install trees above shops

Saturday 3rd December: put up gazebos, lighting, tables - and take down at the end; be a street marshal; be on the helpers' rota (morning, afternoon and evening)

Friday, Sunday & Monday 2nd, 4th, 5th December: help with collecting materials and storing gazebos (heavy work)

To offer your help, contact Caroline at c.e.hughes@ntlworld.com

Please note: all details were correct at time of going to print but are subject to change.

A huge thank you to all the traders, stallholders, performers and volunteers who make the Horsell Christmas Market happen.

Stalls in the High Street and Horsell Evangelical Church

The Crown

- 1 Thurstons – locally brewed prize-winning beer in gift packs
- 2 Dee's Kitchen – Indian savouries and snacks
- 3 Mike's Turned Wood – turned wood bowls, vases, plates
- 4 Horsell Knitters – knitted and other craft items

Startrite

- 5 The Cricketers – mulled wine, mince pies and hot chocolate (all proceeds to Woking & Sam Beare Hospice)

Hamlyn's

- 6 The Friends of Woking Community Hospital Charity – Christmas cards, second hand books
- 7 Oliver Jones – handcrafted silver jewellery
- 8 Vz Collections – women's clothing and jewellery
- 9 Modern Macrame Makes – macrame hangings, potholders, keyrings
- 10 Marisa Noelle – teenage books
- 11 Clara Sparkles – accessories and gifts

China Chef

- 12 Karen's Cakes and Biscuits
- 13 DeziDesign – art and ceramics
- 14 Galaxy Gems – custom jewellery
- 15 Chris Dance – Christmas wreaths

Deli Class/Boz

- 16 Home Made by Ali – jams and chutneys
- 17/18 Blue Daisy Arts – silk wrapped glassware, handmade bags, Christmas decorations
- 19 Nagihan Seymour – handmade and hand painted ceramics, ornaments

Horsell Evangelical Church – Inside

- 20 Dolly Makes – handmade doll and teddy bear clothes
- 21 Vivien Warn – Bone Cancer charity
- 22 Woking Creative stitchers – handmade gifts and cards

- 23 Jan's Fripperies – handmade jewellery and gifts
- 24 Keith Farmer – Family History research
- 25 Elmo – children's books
- 26 LizeDecor – Christmas decorations
- 27 Val Thorpe – artist
- 28 Paula Knight – cottage cards

Horsell Evangelical Church – Car Park

- 29 Mr Tony Wellbelove – woodturning and Christmas decorations
- 30 Rachel's Home bakes – handcrafted sugar cookies and cakes
- 31 Scents of the Village – candles, diffusers, wax melts
- 32 KittyKnits – handmade clothes for children
- 33 Homeforkeys – handmade mini-front door keyholders
- 34/35 Utterly Cup Cakes – cup cakes and baked goods
- 36 Ali B Designs Surrey – decorations and printed cards with own artwork
- 37 Carole Croft – charity goods, gifts and calendars for MIND
- 38 ONAYTB – old, new and yet to be items

Café Primo/Lisa Jones

- 39 Hannah Bruce - Fine Art, scarves, art prints, resin earrings
- 40 Chloe's Cakes
- 41 Samber Riding for the Disabled – Christmas gifts, cards and crafts
- 42/43 The Cozy Woodshed – locally sourced wood and bark, hand-painted with birds and animals
- 44 Jane's Hearts and Crafts – decoupage gifts, wood and slate hearts
- 45 Strawberry Patch Crafters – homemade fabric and knitted goods, craft kits

Between Seymours and Beijing

- 46 Woking Lions
- 47 Sassy Sugar Doughnuts
- 48 Scouts – Christmas Wreaths



Our local traders are joining in too!

- **Seymours:** children's face painting
- **Apples & Pears:** gifts and cards, plus Horsell Calendar
- **Beijing:** Chinese starters and snacks, spring rolls outside
- **Studio 101:** gifts from Father Christmas with Woking Lions
- **Prince & Sons:** burgers and hot dogs from 12 to 4pm outside
- **Squisito Takeaway Kitchen:** freshly cooked pizza slices or pasta bowls

- **Pets Corner:** I-Spy – hunt the animal round the shop
- **Woking & Sam Beare Hospice shop:** special Christmas Sale
- **Horsell Kitchen:** Food stall and baps on the terrace
- **Norsworthy's:** 10% off gift vouchers on the day
- **Café Primo:** paella and chicken piri piri outside
- **RSPCA:** Tombola and raffle for children and adults – raising funds for RSPCA
- **Co-op:** I-spy elf stickers in the shop; mince pies
- **Deli Class:** Hampers, prosecco, panini, panettone
- **The Crown:** Thurstons Beer
- **Poppies & Peonies:** Explore the secret side path and discover Christmassy things in the little room
- **The Cricketers:** Mulled wine, hot chocolate and mince pies – all proceeds to WSBHospice
- **The Red Lion:** Horsell Charity Chutney
- **St Mary's Church:** Christmas Tree Festival, music and refreshments
- **Horsell Evangelical Church:** children's crafts, puppet shows, refreshments

Live music from local performers

In front of Masala Spice, High Street:

- 1.00pm: Adam Moloney and *Lost in Surrey*
- 2.15pm Almac Bisley Brass Band
- 3.00pm Surrey Ukeaholics
- 3.30pm Almac Bisley Brass Band
- 4.10pm U3A Ukeleles
- 4.40pm Salvation Army Brass Band and Community Carol Singing

In the Evangelical Church lobby:

2-4pm *Saxophone Quartet*

The Crown

4-5pm: Malcolm and Jill Banks Paradox Duo: guitar, bouzouki, melodeon, flute, tin whistle and vocals with folk, sea shanties and more.



Horsell Village Christmas

Please note: all details are correct at time of going to print but are subject to change.

Christmas Tree Festival at St Mary's Church

Put your creative ideas into a Christmas tree and join us at church from Friday 2nd December, 2.30pm to 6pm, and Saturday 3rd December, 10am to 5pm. Entry is free, and we look forward to individuals, groups and local businesses joining in.



All the details are on the entry form, which you can request via our website stmarys-horsell.org.uk/contactus.htm or by email stmaryshorsell@btinternet.com.

We are famous for our delicious home-made cakes, and there will be mulled wine after 12noon on the Saturday, when there will also be local groups and soloists providing live music. There's a grand raffle too, so please come along and have fun!

Mosaic Choir Concert

Saturday 10th December 7.30pm

Save the date for the Christmas carol concert raising funds for Horsell Village Hall – the perfect start to your festive season! Join wonderful local Chamber Choir Mosaic at St Mary's Church, Horsell, at 7.30 on Saturday 10th December to hear beautiful choral pieces, sing favourite carols and support our community hub.

Tickets available at St Mary's Church, the Co-op, and Premier Stores, or from dorothy@andover.co.uk (phone 01483 836031) or from mosaicchamberchoir.org.uk



MOSAIC CHAMBER CHOIR

HORSELL VILLAGE HALL'S ANNUAL CHRISTMAS CAROL CONCERT



An evening of festive music performed by **MOSAIC CHAMBER CHOIR** AT ST MARY'S CHURCH, HORSELL SATURDAY 10 DECEMBER 2022 at 7.30PM

Adults - £12 Children under 18 - £5
Price includes refreshments

Tickets available at St Mary's Church, the Co-op, and Premier Stores or email dorothy@andover.co.uk (phone 01483 836031) or from mosaicchamberchoir.org.uk

Music in the Market

Listen to the music while you shop! Whatever your musical taste – traditional carols, classical, pop or rock – you'll find it's catered for by our talented performers.



The 2023 Horsell Charity Calendar

Remember to get your 2023 Horsell Charity Calendar! On sale from the stall outside Apples & Pears at the Christmas Market for just £8, it includes photos of Horsell and the surrounding area, taken by local people, as well as reminders about all village events in 2023 – plus lots of information on items of general interest! This year the profits will go to Woking Talking Newspaper; Samber, Riding for the Disabled; Intergenerational Music Making; and Your Sanctuary.





NORSWORTHY'S
Health & Beauty

74 High Street, Horsell,
Woking, Surrey GU21 4SZ
Tel: 01483 727716

Opening Hours

Monday	By Appointment Only
Tuesday	10am - 8pm
Wednesday	10am - 8pm
Thursday	9am - 6pm
Friday	9am - 6pm
Saturday	10am - 4pm
Sunday	Closed



info@norsworthy.co.uk

Meet our Horsell traders

Here are a couple of our wonderful local traders who help to make our village such a vibrant place. Learn a bit more about them and their businesses. Make the most of them – shop local!

If you're a trader in Horsell, and you'd like to appear in future issues of The Resident, just send an email to theresidenteditor@gmail.com

Name of Horsell business:

The Horsell Framing Company

What do you do?

We provide bespoke framing for art, photography, memorabilia – in fact anything that can be preserved by framing. All commissions are completed in-house using a large range of frame types and mount options.

Who might I speak to if I get in touch?

Me – Matt Martin.

Where are you and how do I get in touch?

We are at 102 High Street, Horsell, GU21 4ST. Tel: 01483 346270 Email: Horsellframing@gmail.com Website: thehorsellframingcompany.com

Why do you love your work?

The diversity of items brought in to be framed and the fascinating personal history many of these items have for the owners. I also love helping customers choose the best frame to best highlight their artwork. It is immensely satisfying when a customer comes in wanting a simple black frame but leaves

having ordered something totally different that truly suits the piece.

What are the best bits of your job?

Customer interaction and seeing a customer's reaction when viewing the framed item for the first time.

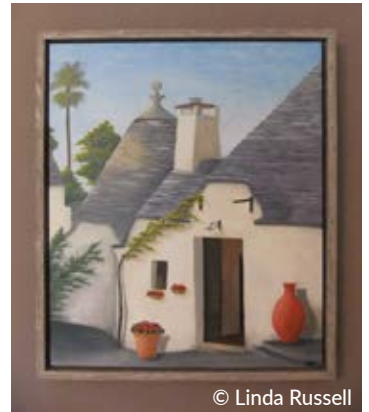
What's your dream for your business?

We will always remain a small business focussed on customer service and providing a quality service at a fair price. Our motto is "do the right thing always".

What's your favourite commission so far?

A difficult question! However, I think it was a simple hessian sack, brought in by a client. As I recall, it belonged to her great grandfather, who was an itinerant worker in Northern Europe, and the sack held his worldly belongings as he travelled from place to place. It has his name stencilled on it. It was very poignant.

Linda says: Matt's suggested frame colour and style for my painting of a trullo in Puglia sets it off well – it looks good on my wall.



© Linda Russell



Name of Horsell business:

Sacha Boxall Interiors

What do you offer?

We make bespoke handmade soft furnishings including curtains, Roman blinds, cushions, pelmets, we also supply a variety of blinds, fabrics, curtain poles/tracks, trimmings and wallpapers. We offer interiors consultancy advice and services. We also teach sewing workshops and classes.

Who might I meet if I visit?

Me, Sacha Boxall, or our Administrator, Carol.

Where are you and how do I get in touch?

Studio 6, Silks Yard, Church Hill, Horsell, GU21 4QE, 07795067474 Email: Enquiries@sachaboxall.co.uk or sacha@sachaboxall.co.uk Website: sachaboxall.co.uk

Who are you and why did you set up this business?

I'm a mum of four and nana to three. I have a huge passion for interiors but, raising a large family on a limited budget, I had to be creative when renovating our family home. I taught myself to use a sewing machine, then learnt how to make basic blinds and curtains. After relocating to a home with lots of windows to dress, I enrolled in a local college to



learn how to professionally make soft furnishings. I went on to study this for a further five years and, while developing my skills, began making curtains at my kitchen table for family and friends. My work was recommended, so then I decided to start up my soft furnishings business in 2009.

Why do you love your work?

I love helping people make their house their home by creating beautiful soft furnishing to enhance their spaces. I also love to teach people how to use a sewing machine, to give them the confidence to make and create themselves.

What are the best bits of your job?

Working with beautiful fabrics, creating gorgeous handmade soft furnishings. I feel immense pleasure teaching people how to learn new skills.



“ Excellent

The school successfully fulfils its aim to provide a nurturing and inspiring community and to prepare pupils for happy, healthy and successful lives in an ever-changing world



CONTACT US
TO ARRANGE
YOUR VISIT

HALSTEAD-SCHOOL.ORG.UK
01483 772682
LESS THAN 1 MILE FROM WOKING STATION

HalsteadPrepSch [f](https://www.facebook.com/HalsteadPrepSch) [i](https://www.instagram.com/HalsteadPrepSch) [t](https://www.tiktok.com/@HalsteadPrepSch)



HALSTEAD
HALSTEAD PREPARATORY SCHOOL
FOR GIRLS AGED 2-11 YEARS

Winter on the Common

Sharing nature with others

I was out on Horsell Common, planning for an upcoming school visit on seasonal change when I spotted a trio of Woodlarks fly up from the path ahead of me. As they passed, they let out a little collective warble, I think as a 'hello' to me, before dropping into a gap amongst the heather. I hadn't seen Woodlarks for a while, so the encounter was a special one. These streaky brown birds are often overlooked, because of their ability to blend inconspicuously into the heathland landscape.

As I got my phone out to log the sighting on my BirdTrack app, a couple of walkers enjoying a mid-morning stroll on the Common asked me if I was okay. I think they thought I was lost and using my phone to work out where in the world I was!

I thanked them for their thoughtful concern and mentioned the Woodlarks I had just encountered. We talked about these amazing, rare birds and I showed them pictures and played their song so that they might spot them on a future wander.

Michael will always mention Nightjars!

As is inevitable, I turned the conversation to Nightjars. I'm not sure of the exact stats, but probably about 90% of my conversations end up with me talking about Nightjars. I'm healthily obsessed with these brilliant nocturnal birds that will now be sunning themselves somewhere in the vicinity of the Democratic Republic of Congo!

It is always a joy to meet people so interested in their local wildlife and I feel incredibly fortunate that my job allows me to share our amazing nature on a daily basis. Also, it's always great to bump into people who are concerned with me getting home safely! Thank you.

Winter on the heath

Our heathlands are a lot quieter in the winter, but there are always interesting things to spot. Bright yellow coconut-scented gorse flowers bring a touch of sparkle to even the dreariest winter's day. Fungi will be popping up all over the place – especially in the wooded areas. Can you spot a purple Amethyst Deceiver or the red-with-white-spots Fly Agaric? The latter is the one fairies sit atop! If you're lucky, you might spot a Woodlark before it departs the heath until spring.

A request...

I am always looking for groups (of all ages!) to introduce to the wonders of our heathlands and wildlife, so if you are a teacher, know a teacher, a governor or a parent, I would be eternally grateful if you could mention me to your schools or any community group you might be a member of. I run a variety of fun and educational activities on the heath, in classrooms and village halls, all designed to connect people with their local nature.

If it helps, I'll leave you with a quote from a teacher: -

"Thank you so much for visiting today. It was so interesting and I have never seen the children so engaged. Some of the children drew pictures after you had gone of the plants you showed them. When they left, they were telling their parents all about the talk you gave them. I think this is such a wonderful idea to go to schools to talk about nature."

Michael Jones

Education Officer – Thames Basin Heaths Partnership

tbhschools@naturalengland.org.uk and

www.tbhpartnership.org.uk/schools



Our Amazing Heathlands



FUNERAL DIRECTORS & MEMORIAL STONEMASONS



Robert, Chris, Andrew & Michael Lodge

OUR FAMILY HELPING YOUR FAMILY

For over 240 years, eight generations of the Lodge Family have been privileged to help local families in their time of need.

We provide all funerals, whether modern, traditional, green or alternative, with care and compassion.

WOKING

48-54 Goldsworth Road,
GU21 6LE

01483 768942

Trustpilot

"The staff at Lodge Brothers have been sympathetic, understanding and supportive. They were with us every step of the way throughout a very difficult time and we are and will be forever grateful for their support."

★★★★★
Mr Robinson

Lodge BROTHERS 1780
the family you can turn to
www.lodgebrothers.co.uk

ASK ABOUT OUR PRE-PAYMENT FUNERAL PLANS

FLORAL TRIBUTES • FUNERAL PLANS • WILLS & PROBATE



ROSS LANDSCAPES LTD

01483 763771

Complete landscape services including.....

- Block paving
- Brickwork
- Driveways
- Water Features
- Patios
- Turfing and Fencing

www.rosslandscapes.co.uk

Horsell Gardens



Annuals such as Cerinthe, prefer bacterial-heavy soil. Photo: Graham Barden.

If you have ever wondered why you struggle to grow a particular group of plants, it might be down to the soil microbiology. The soil food web is teeming with bacteria and fungi, both of which are preyed upon by protozoa, nematodes, arthropods, and other larger organisms such as animals and birds. All gardens differ in the quantity of microbes in the soil, and some of this is down to the type of plants we grow.

Trees, shrubs and perennials prefer a soil dominated by fungi, whilst fruit, vegetables, grasses and annuals prefer to reside in bacterial-rich soils. Vegetables prefer a soil with a slightly lower fungi rate to bacteria (f:b). Carrots, lettuce and broccoli, ideally want a ratio of 0.3 fungi : 1 bacteria. Tomatoes and sweetcorn will cope well in a range of between 0.8:1 to 1:1.

Bacteria-heavy soils will have no shortage of weeds. At the other end of the scale, conifers require the most fungal-rich soils, as much as 100 times the biomass of bacteria. Oaks and Acers have a range of 10:1 to 100:1. Shrubs less again. Generally, you could say as a rule that the longer a plant lives for, the more fungal heavy the soil requirement.

Of course, you may ask, how can I change the soil microbiology? Adding composts, organic mulches and foliar feeds can reinstate any deficiencies. Adding either green grass clippings or comfrey leaves as a mulch around vegetables will increase bacteria rates. Brown material, such as leaves will encourage fungi if left whole. If shredded first they will be bacterial based. Pine needles will also create a fungal mulch, but only after they have aged for a bit. You can increase the effect further by first adding a thin layer of compost before mulching on top, although care is needed to not add too much material, as water and air need to penetrate through to the soil. The microbes in the compost inoculate both the soil and the mulch, so it decays and releases nutrients.

A compost tea or ferment can be created from plants such as comfrey, lavender, dandelion, nettle and marestail. Fill a bucket three-quarters full with your chopped up plants and cover with water. Strain the water off after three days and dilute to ten parts water. A compost tea is done in the same way, but with an aerator to ensure oxygen is added to the mixture. This can then be applied directly to the soil or as a foliar spray.

So if you have the right soil pH and aspect, but you've been struggling to grow a particular type of plant, then the issue may lie deeper in the soil so thinking about how you feed the soil may be the answer.

Pam Barden, Painted Fern Garden Designs



Fungal-rich soil. Photo: Graham Barden.

www.yogabysheh.co.uk

Yoga / Pilates

Mondays 10:30 & 18:30 Pilates
11:30 & 19:30 Yoga

Front entrance, Horsell Village Hall
Free parking at side of hall
117 High Street, Horsell, Woking GU21 4SS
Email: yogabysheh@gmail.com

Shen's classes are held in a large hall with parking
The environment is fun and friendly specifically
intended for all abilities as alternatives are given.
There is nothing like a live class
£8 per class, discounts on block booking
Please turn up early

the home of electricals

Laundry Appliances

from your independent electrical retailer

SIEMENS

**1400 Spin
7kg
Washing
Machine**

WM14N191GB

- 15 programmes incl. hand wash
- Delay start
- Soft touch, dial control
- Dimensions: H84.8 x W59.8 x D55cm

Only £549.00 | 5 Year Warranty*
D Energy Rating

Price Match Guarantee | Super Service
Expert Knowledge | Contact-Free Delivery

Terms and Conditions apply. Sold as an agent of Euronics Limited. All rights reserved. All offers are subject to availability while stocks last. Delivery and installation charges may apply Exclusions and Radius Apply. See in store for full details. Images for illustration purposes only. Copyright Euronics 2022. E&OE 2022.

RSM
Domestic Appliances
FRIENDLY SERVICE • BIG SAVINGS • FAST DELIVERY

YOUR LOCAL DOMESTIC APPLIANCE SUPERSTORE
Knaphill • Guildford • Ashted
Bookham • Epsom Downs
rsmdomesticappliances.com **Call 01483 475000**

Last Houses of Horsell - Lydele

Continuing our articles on the lost houses of Horsell, we have been looking into the history of 'Lydele', also known as 'Locksley', 'Summerhill' and 'Villa Rivas'. Demolished in 1965 it became Lydele Close on Woodham Road (originally Palmerston Road).

The site formed part of Horsell Grange Estate, which the National Liberal Land Company acquired and sold as plots. Builder James Martin of Addlestone bought the site in 1887 and sold 'Locksley' to Ann Garraway, one of the Horsell Fladgate family.

Mrs Garraway let the house between 1887 and 1892 to Mr and Mrs Horace William Gray and their seven daughters, who renamed it 'Summerhill'. While serving as a War Office civil servant, Horace had helped in 1863 to formulate the rules of football.

They were followed from 1893 to 1894 by Dr Henry Smith and Zepherina Veitch. A well-known and respected Harrow-educated doctor, Henry was elected Professor of Systematic Surgery at King's College London, moving in 1866 to private practice in Wimpole Street. He specialised in internal medical problems, writing several books. Zepherina Veitch, his third wife from 1876, had worked in France as a nurse during the Franco-Prussian War and was nursing sister in charge at Charing Cross Hospital. A pioneering midwife she was co-founder of the Royal College of Midwives and president of the Midwives' Institute from 1890. She had lived in 'Kettlewell Vale' with her parents and novelist sister Sophie



Zepherina Smith. Photo: public domain from Wikipedia.



Henry Smith. Photo: courtesy of The Royal College of Surgeons.

in 1871 when her clergyman father helped with Horsell church matters. After returning to Horsell both Henry and Zepherina died in 1894 within two months of each other. They are buried in Horsell churchyard.

In 1895 Jane Emily Giles lived at 'Summerhill', then in 1901 Mrs Garraway conveyed the house to George Phillips and in October 1906 it sold for £2,900 to Henry Wenden. By 1914 the 8-bedroom house was described as a 'detached house, brick and tiled, good passage hall, panelled drawing room, good dining room, conservatory, workroom, WC, housemaid's parlour, servants' sitting room, bathroom (hot and cold), croquet lawn, kitchen garden, fruit garden, garage, 1 acre... Henry had been manager of the Great Indian Peninsular Railway (GIPR) which eventually ran from Bombay (Mumbai) to many destinations. Involved with Indian railways for forty-seven years, Henry retired to England becoming a director of GIPR and dying at 'Summerhill' in 1919.

He was followed by John Malvern Dame, born West Bengal in 1868. Also connected to Indian railways, he worked for Messrs Donald Graham and Co. in Karachi. By 1922 John and his wife had retired to Hampshire. Albert Edward Crapnell bought 'Summerhill' for £3,250.

In 1903 WT Tutcher, a walking colleague of Albert Crapnell, had discovered a camelia in Hong Kong and named it in his honour. Albert worked for the Hong Kong luxury goods company Lane Crawford from the early 20th century and by 1922 was both managing director and a JP, but returned suddenly to England at the end of the year, as an urgent plea for staff in 'The Times' shows. Back at 'Summerhill' and on the board of John Bolding and Co. makers of sanitaryware, he supervised the voluntary liquidation of the company Minton Hollings, which introduced blue-and-white china to Britain. In 1926 the family upsized nearby to 'Northcourt', acquiring a splendid Rolls Royce saloon and moving to Hook Heath by 1950.

The most flamboyant residents of the house moved in on 8th March 1926. Albert Crapnell sought to sell 'Summerhill' to Cecilie Martinez de las Rivas for £3,500, but like everything about Cecilie, all was not what it seemed. To begin near the beginning, Cecilie was born Frances Gertrude Woods the daughter of a plasterer in Barnes 1885 (Cecilie claimed 1889 in later life). She and Reginald Joseph Murray, also born 1885, married in 1908. In 1913 Reginald was left a considerable share in the estate of Don José



Woking & Sam Beare
Hospice and Wellbeing Care

Business Supporter 2022
Proud to support our local hospice

We are proud to support Woking & Sam Beare Hospice
We will donate £1 from every MOT booking

WOKING'S PREMIER SERVICE CENTRE



Here at Field's Car Centre we pride ourselves on our standards of service and care. Looking after Woking's motorists for over 40 years.

Google Reviews 5.0 ★★★★★
Over 400 '5 Star Reviews' and comments from local people.

You can BOOK ONLINE NOW and check prices!
www.fields-carcentre.co.uk
Just type in your registration, you will find pricing and option to book.

01483 766634
Units 5-7 Goldsworth Road Ind. Est.
(Just over the bridge from Horsell Moor)

Alan Greenwood & Sons
Independent Family Funeral Directors




Caring and Compassionate Service 24 hours 365 days
Latest Jaguar or Mercedes Funeral Vehicles
Golden Charter Pre-paid Funeral Plans
Home Visit Arrangements
Everything you would expect from a Funeral Director
We will not be beaten on price

Mimbridge Garden Estate Station Road Chobham GU24 8AR 01276 858363	2 Aldershot Road Woodbridge Hill Guildford GU2 8AF 01483 567845	5, The Parade Frimley, Camberley GU16 7HY 01276 684 650
66 Send Road Send, Woking GU23 7EU 01483 210 222	14 Guildford Road Bagshot GU19 5JH 01276 473 707	1 Anchor Hill, Knaphill, Woking GU21 2HL 01483 487889

Visit Our Website for Full Details of Our Services and to View All Our Local Obituaries
www.alangreenwoodfunerals.com

Martinez-de-las-Rivas, a wealthy factory owner in Bilbao: it is uncertain whether Reginald was an admired protégé or an illegitimate son. While children John Gordon and Gilbert Reginald were registered as Murray, sometime between 1917 and her husband's death in 1920 the couple took the surname Martinez-de-las-Rivas and Frances became Cecilie. However, the Martinez-de-las-Rivas fortune seems to have come to José's son Joseph in Bilbao and Bournemouth lawyer Charles Sutton as Reginald's sons were still minors. Albert Cracknell therefore conveyed the house to Joseph Martinez-de-las-Rivas and Charles Sutton through the Public Trustee but when 'Summerhill' changed hands in 1926 it was strictly to the Public Trustee. This did not stop Cecilie: she advertised the coming-of-age party for her elder son in 'The Times', owned a large Duesenberg car, attended Ascot and lunches at London's Mansion House and called herself Madame, or even Countess. She re-named 'Summerhill' 'Villa Rivas' and was joined by former army officer Hubert Edmunds who stayed with her the rest of her life. In 1935 a theft of documents and heirlooms made the national press, but in 1937 she and Hubert left for a peripatetic life in Bournemouth until her death in 1951.



Mme Martinez-de-las-Rivas and her partner, or son. Photo reproduced by permission of Surrey History Centre. © Surrey History Centre.

The Public Trustee then conveyed the house to Baron Georges Ernest Edmond Marchand. Born in Dunkirk, he came to the UK as a young man and worked as a clerk to a woollen merchant in Edinburgh. He renamed the house 'Lydèle', perhaps after his wife Lydia.

On returning to Scotland Georges became honorary Belgian consul and representative of his friend General de Gaulle during World War 2. He retained ownership of 'Lydèle' and let the house to Constance Bulman, wife of Paul 'George' Bulman (henceforth referred to as George). Constance was brought up in Luton where her father Edmund Wiseman revolutionised the straw hat industry by inventing a concealed stitch sewing machine. George served in WW1, gaining the Military Cross and the Air Force Cross with two bars. Renowned as one of the best test pilots he became chief test pilot for Hawkers and flew the 'Hurricane' on its first flight. In WW2 he was head of the Aircraft Testing Branch of the British Air Commission in Washington D.C. gaining a CBE. On one occasion while piloting the photographer of 'Flight' magazine at low level over Brooklands he looped-the-loop, not realising his passenger had released the harness to get a better view. Fortunately, both photographer and camera were unharmed.

By 1944 the Bulmans had purchased the freehold of 'Lydèle'. Their son Raymond Paul was killed in 1945 on active service with the RAF and George retired the same year. In 1963 George died and is buried in Brookwood Cemetery. A neighbour of our recalls a house full of propellers when she went to play the piano for the Sunday School Constance held there. After George's death Constance and her remaining son stayed at 'Lydèle' until moving to West Horsley in 1964 when they sold the house for £15,000 to Masthigh. J W Clarke builders acquired it, demolishing the house and developing the site as Lydele Close by 1968.

Richard and Rosemary Christophers



Paul 'George' Bulman: with Hurricane. From the website 'This day in aviation' © Bryan R Swopes.



Camelia Crapnelliana. Photo: Hong Kong botanical gardens.

Sophie Sews

CURTAINS | BLINDS | INTERIORS

At Sophie Sews we create bespoke curtains, blinds and soft furnishings for every home.

Established for over ten years and offering complimentary design visits, Sophie Sews is an award winning company covering Surrey, Berkshire and the surrounding area.

In short, we listen, we design, we create and we fit.



WWW.SOPHIESEWS.COM

01483 568056 • 07738 514489 • sophie@sophie sews.com

76 High Street, Horsell
GU21 4SZ

Proudly supporting

Horsell Village This Christmas



Seymour's

87 HIGH STREET, HORSELL



Friday 2nd December
Christmas Tree festival
St. Mary's Church
2.30 pm - 6 pm

Saturday 3rd December
Christmas Market High
Street
1pm -5pm

Saturday 3rd December
Christmas Tree Festival
St. Mary's Church
10 am - 5 pm

Saturday 3rd December
PTA Christmas Fair The
Horsell Village School
12pm -3pm